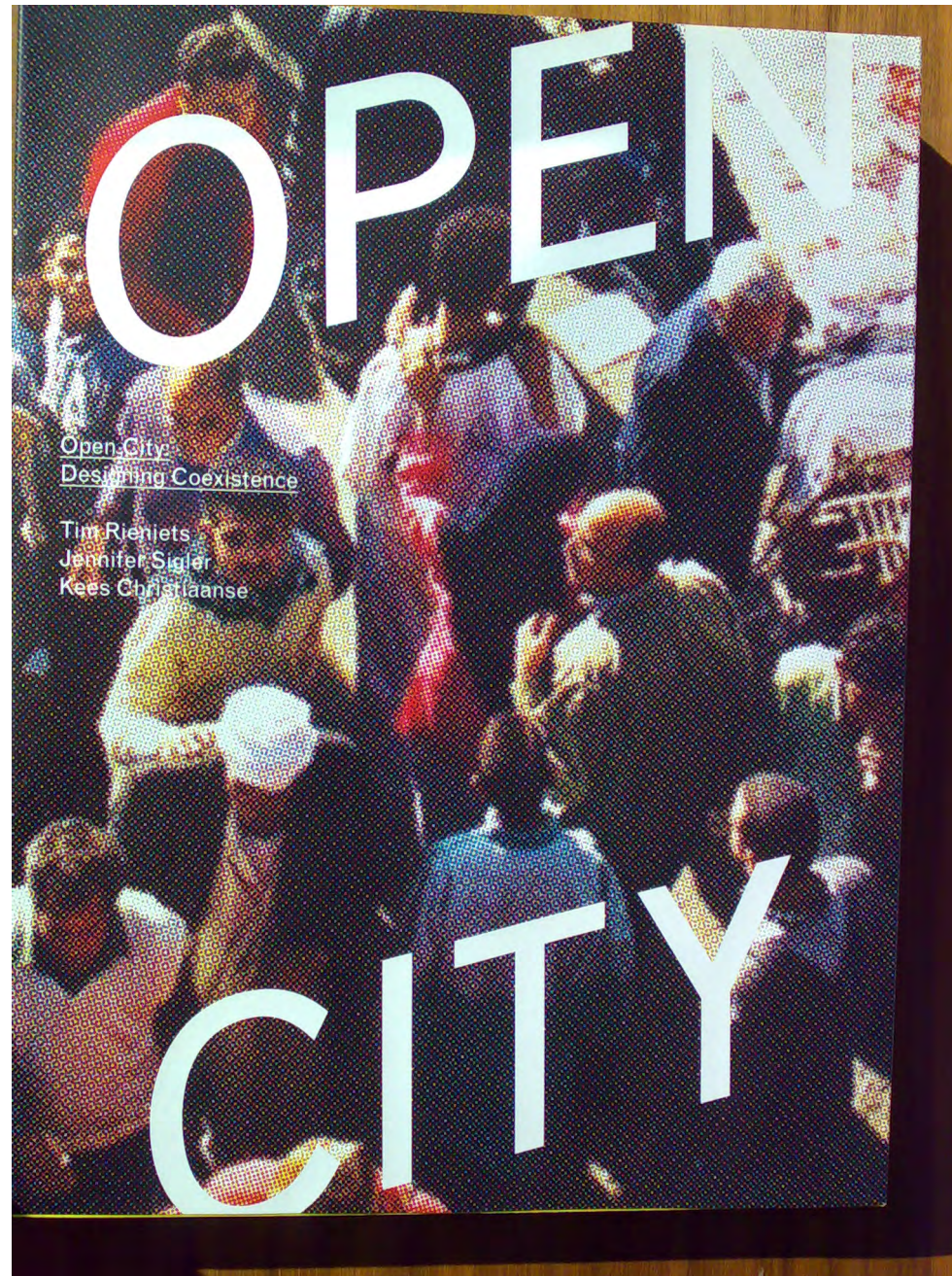


# Europa Allee Energiesalon

091118

Kees Christiaanse

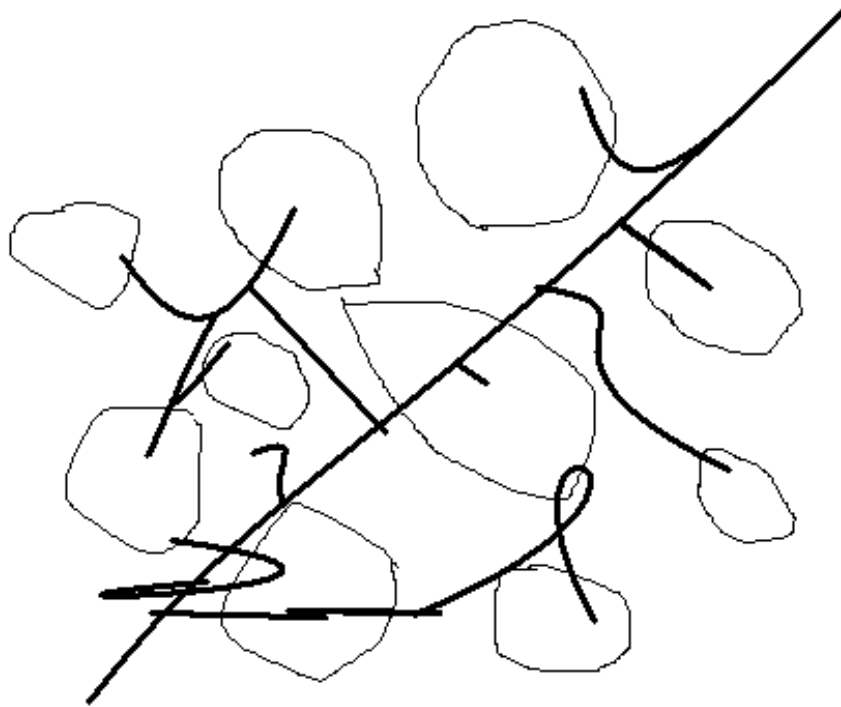
KCAP ETHZ



091118 Europa Allee Kees Christiaanse



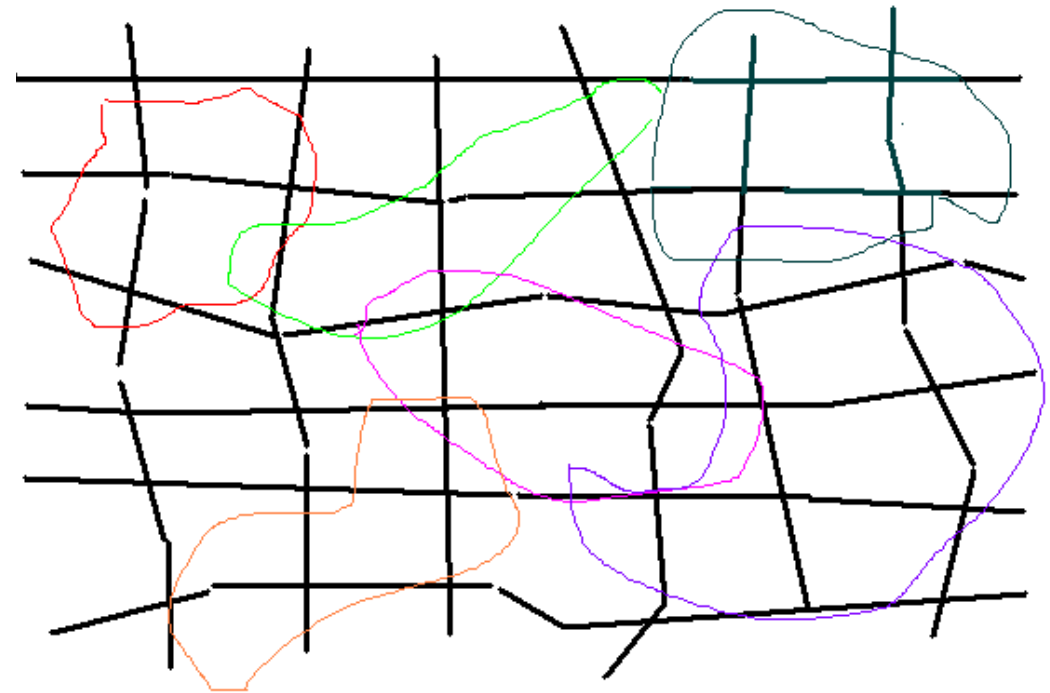
091118 Europa Allee Kees Christiaanse



**City as a tree**

**1 spatial**  
**2 social**  
**3 program**

separation | cul de sac  
 segregation  
 monofunctional

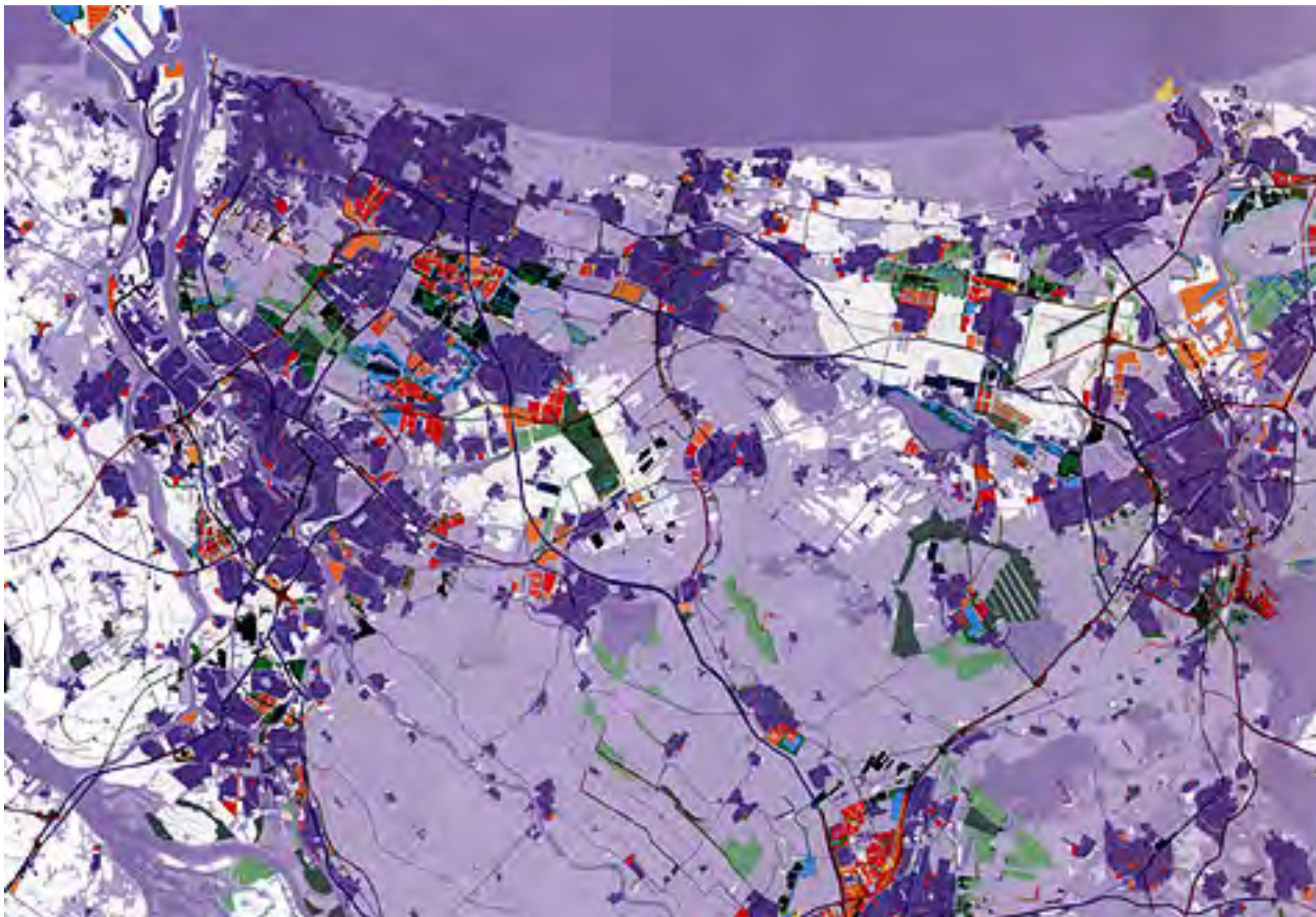


**Open city**

multi-directional  
 coexistence  
 diverse

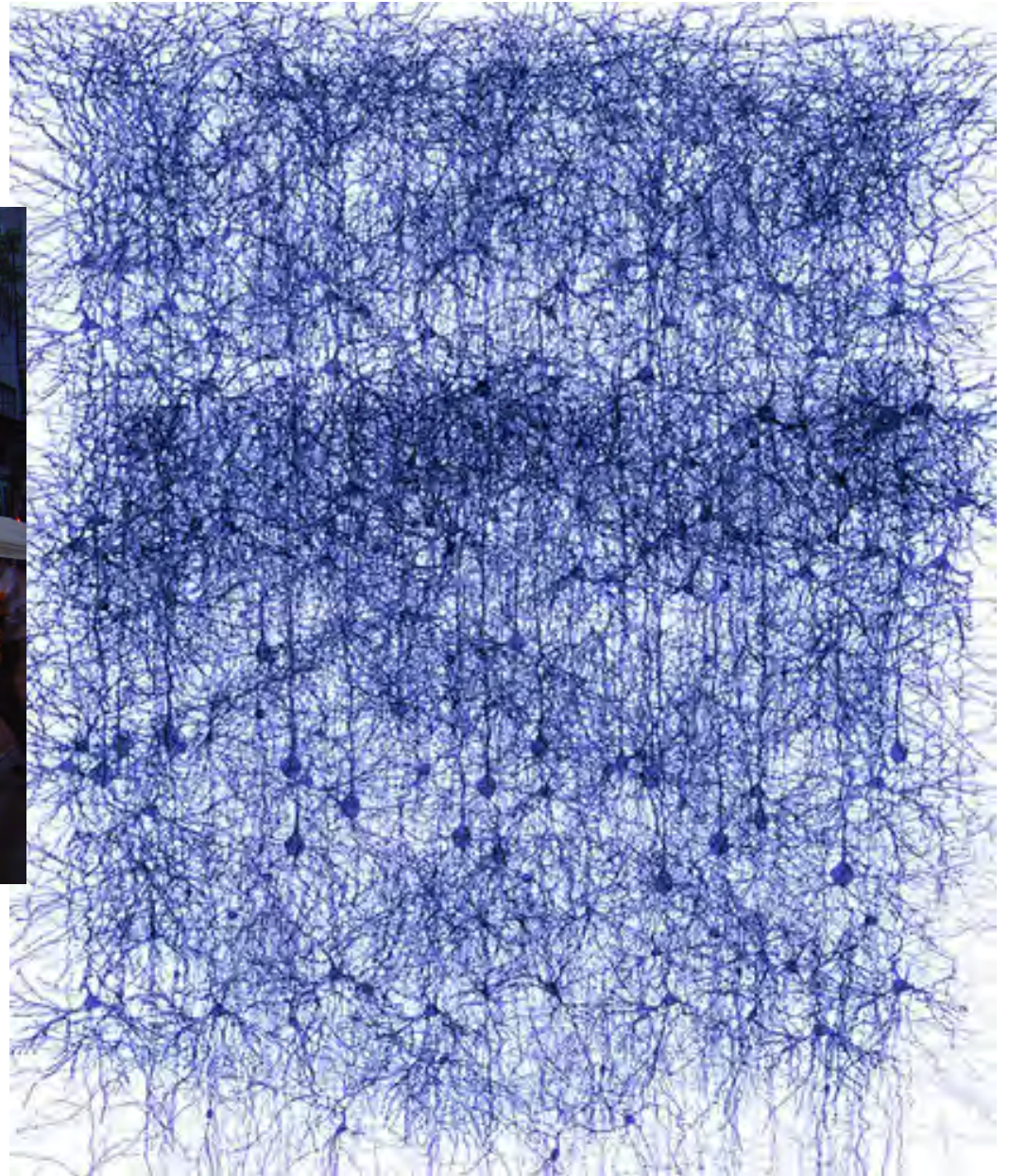


091118 Europa Allee Kees Christiaanse

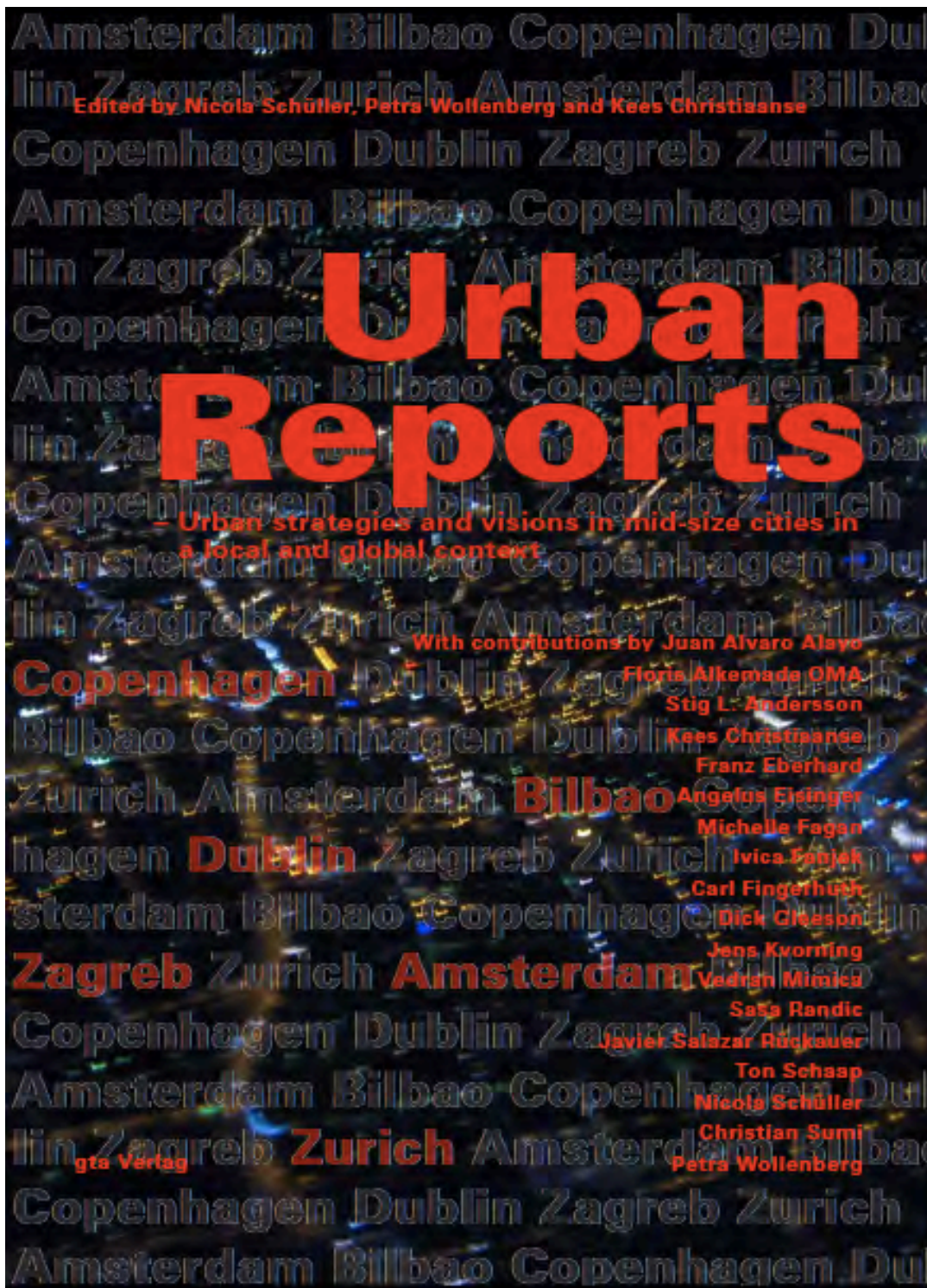


091118 Europa Allee Kees Christiaanse





091118 Europa Allee Kees Christiaanse



1. Structural Vision As Political Covenant
2. Reduced Focus on Juridical Plans
3. Defining „Grands et Petits Projets“
4. Mandated Development Agency

Örestadt

Ria 2000

Temple Bar

Zagreb Holding

Zuid-As

Europa Allee





091118 Europa Allee Kees Christiaanse





- traces and identity

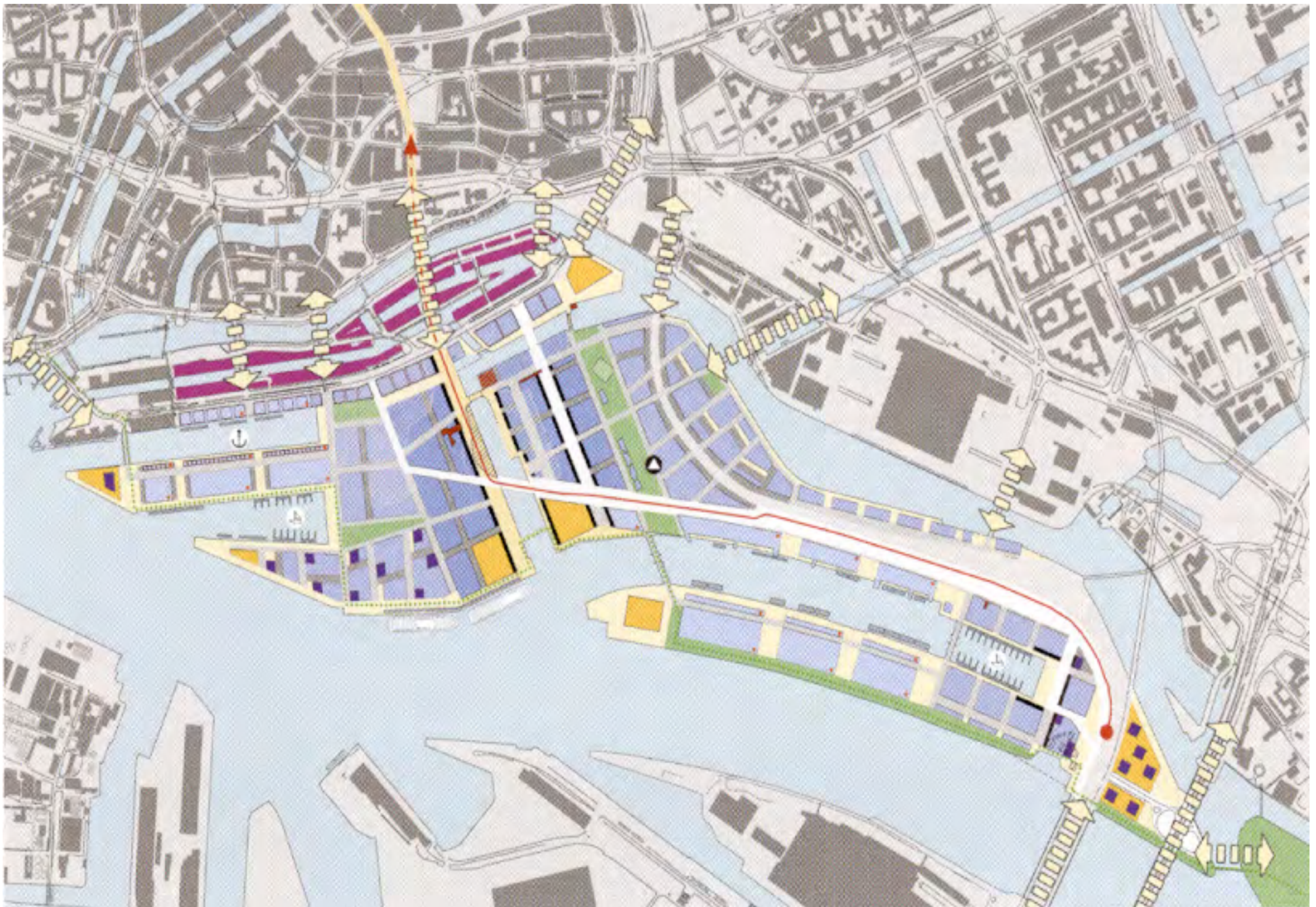
091118 Europa Allee Kees Christiaanse



091118 Europa Allee Kees Christiaanse

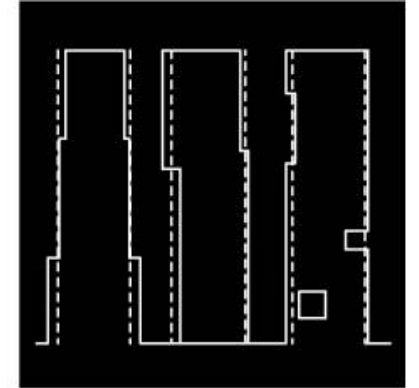
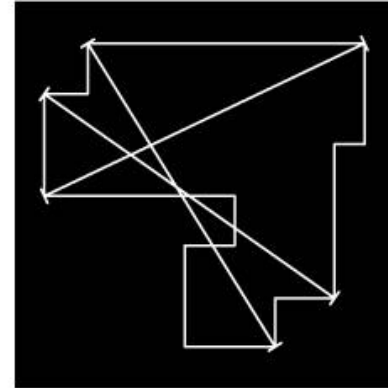
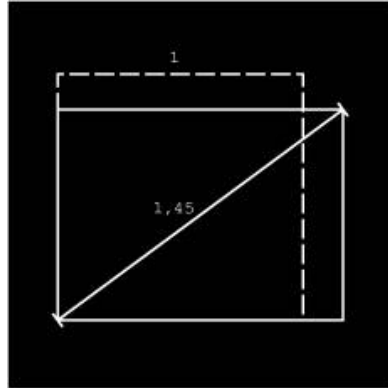
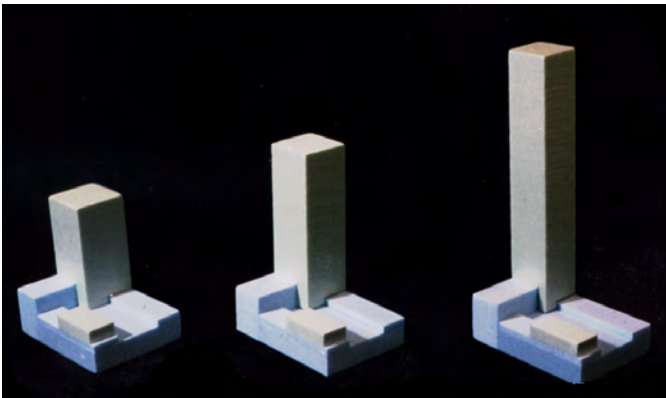
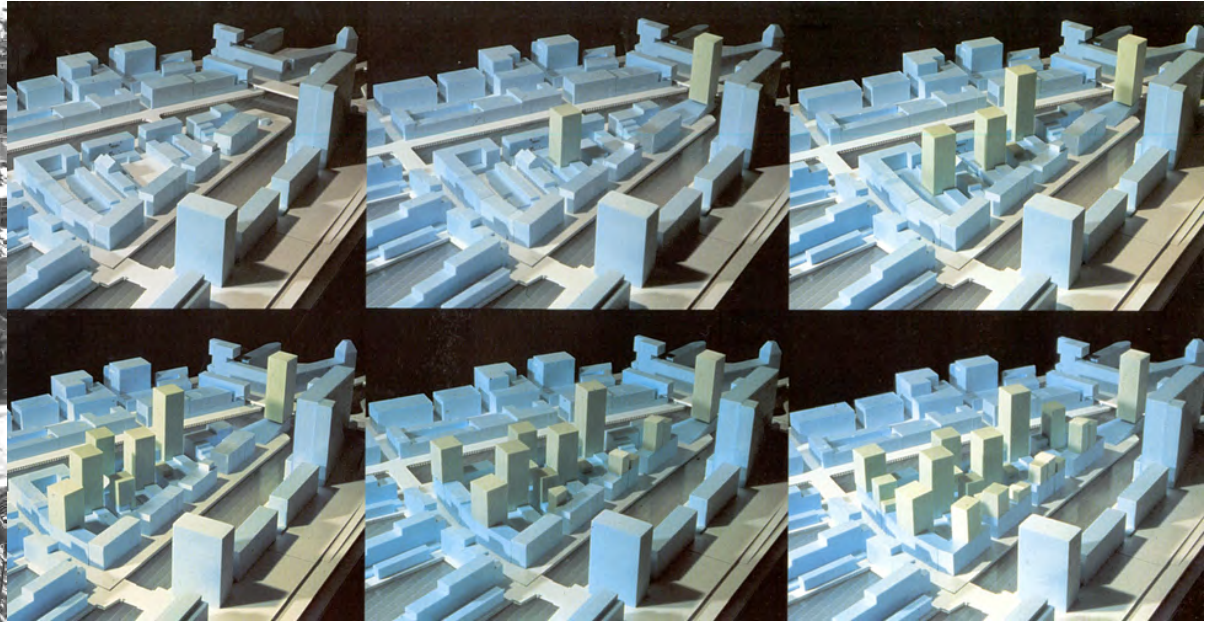
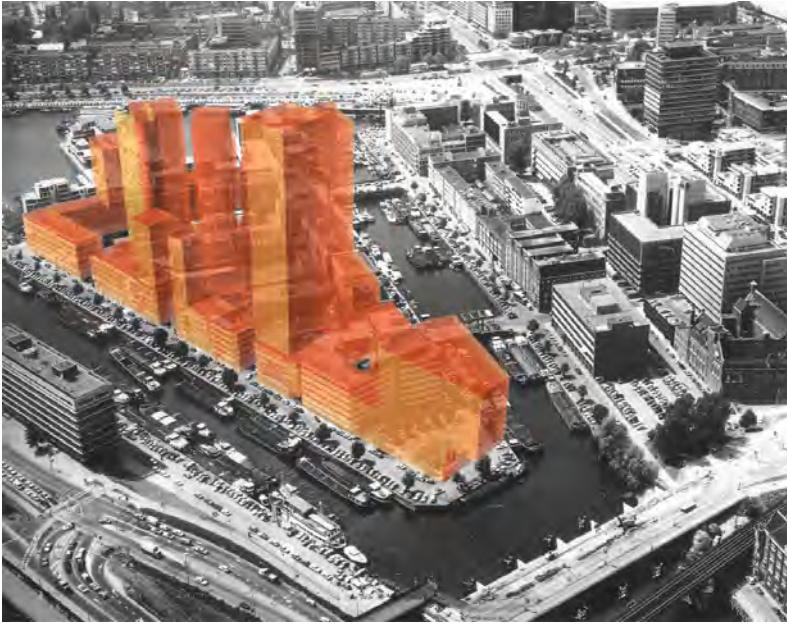


091118 Europa Allee Kees Christiaanse



multidirectional street network 091118 Europa Allee Kees Christiaanse





091118 Europa Allee Kees Christiaanse



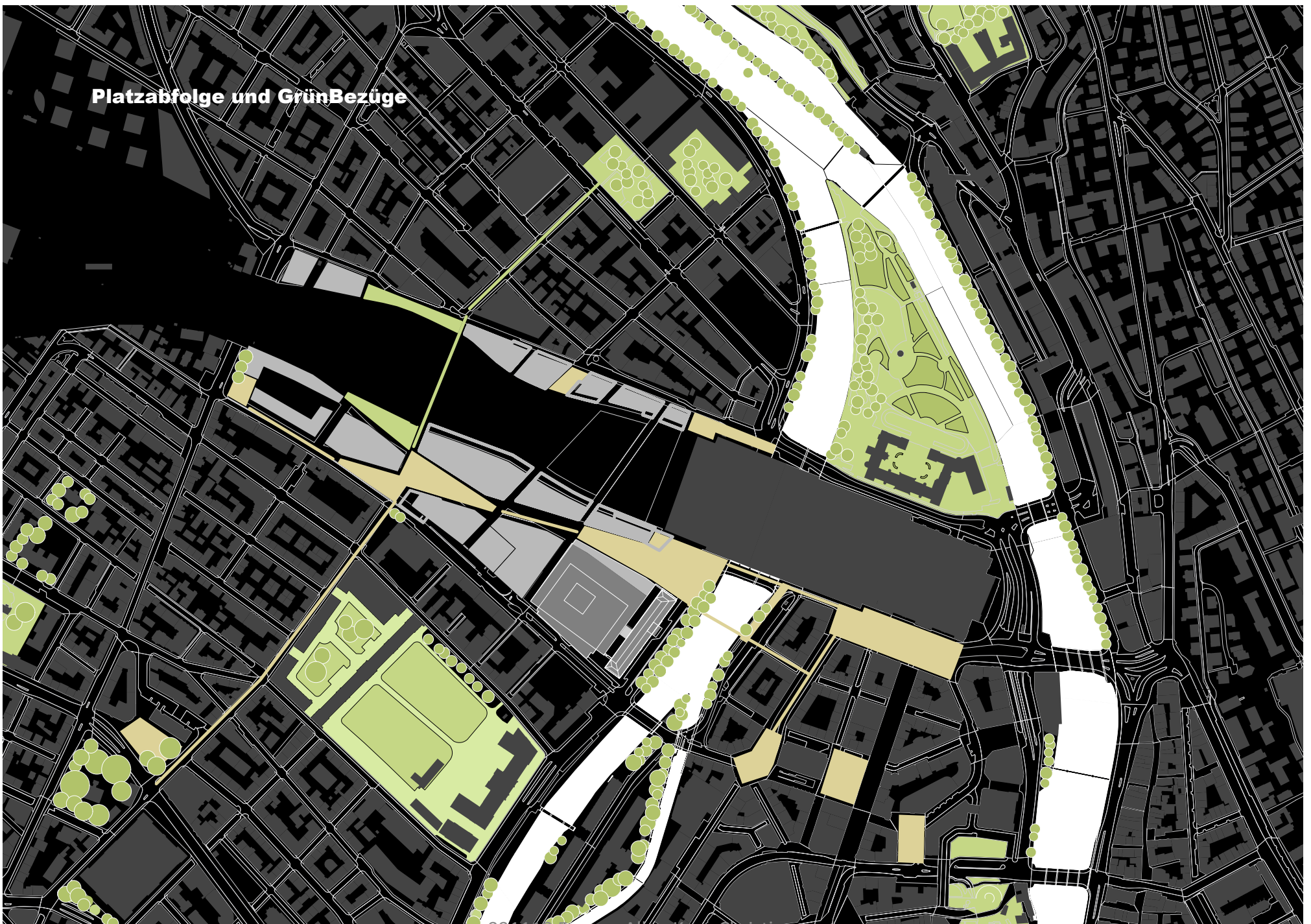


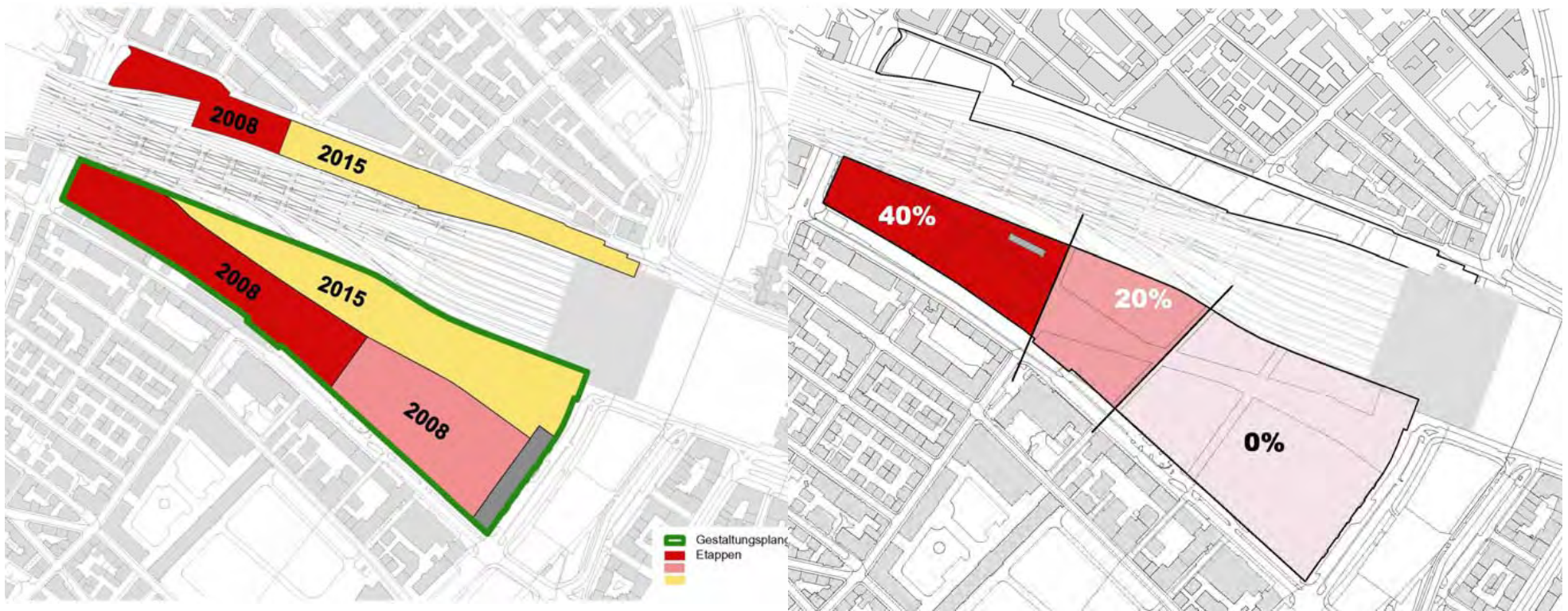




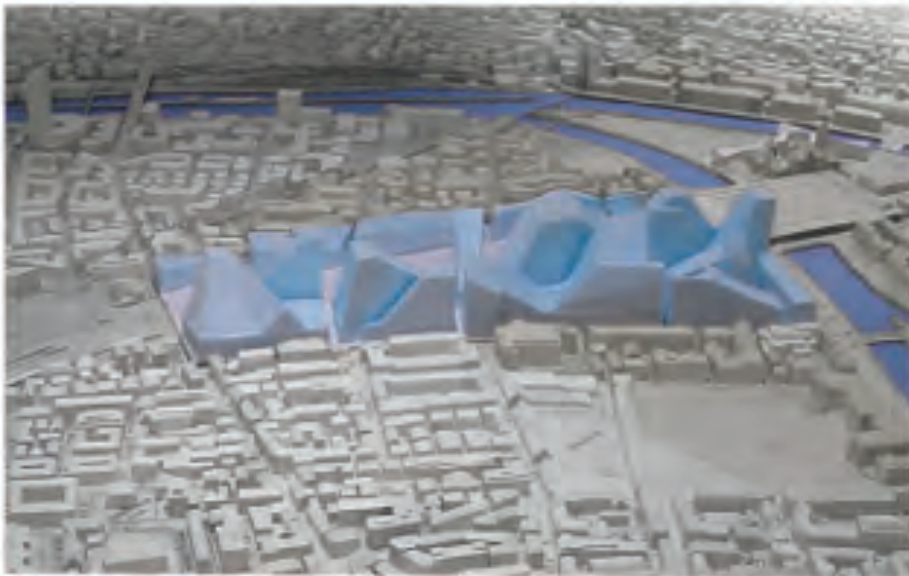
*Europaallee Zürich*

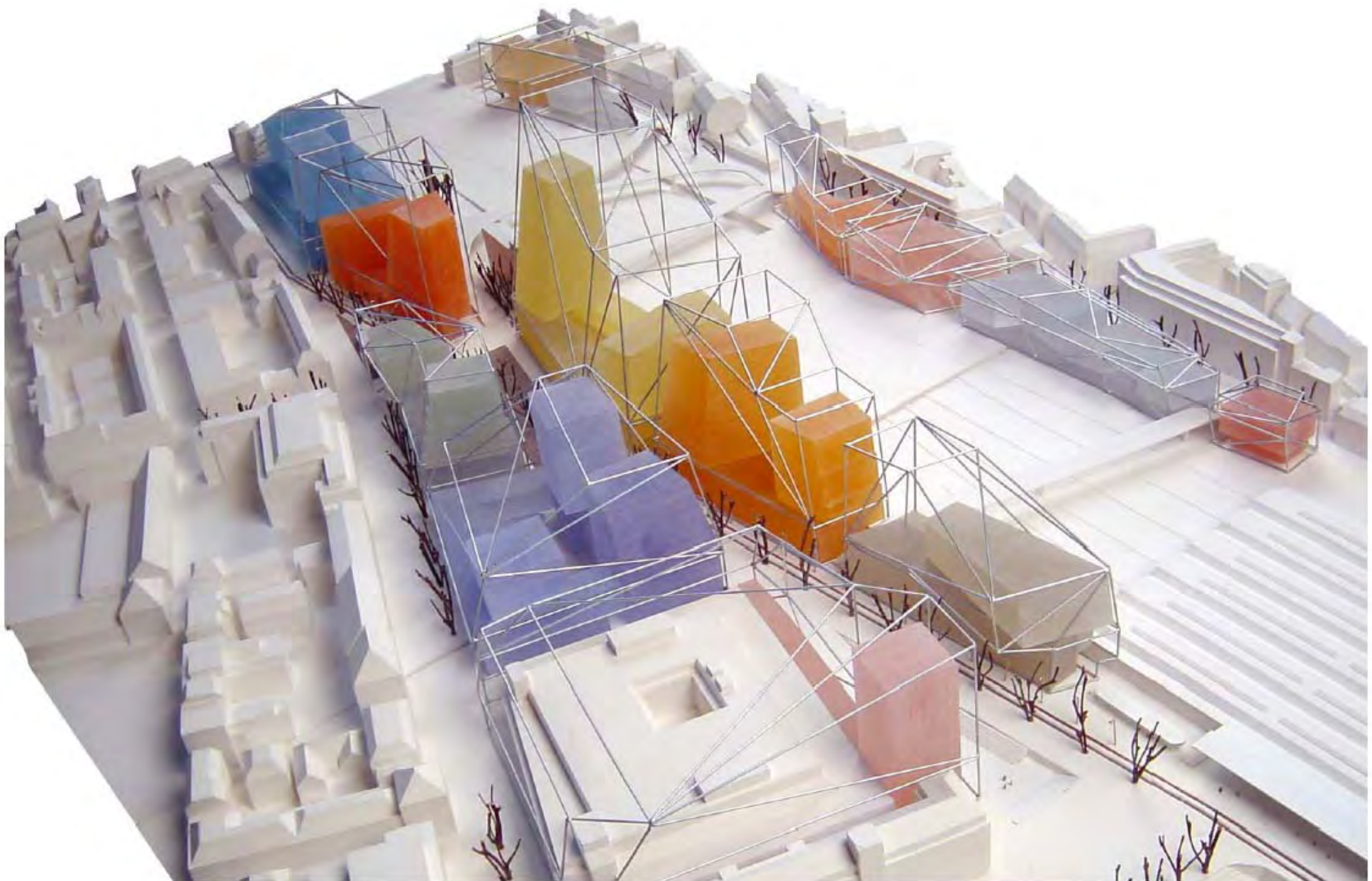
## Platzabfolge und GrünBezüge





## 1.2 Heutige Nutzung des Areals, Eigentum und Verfügbarkeit





091118 Europa Allee Kees Christiaanse

**Neuplanung Umfeld Hauptbahnhof Zürich - Vertiefung Städtebau - öffentlicher Raum**

KCAP/ASTOC Rotterdam/Köln

### WOHNTOWER

- > 60 - 110 m hoch
- > im Blockverbund
- > Grundfläche ca. 650 qm

### BÜROGEBÄUDE

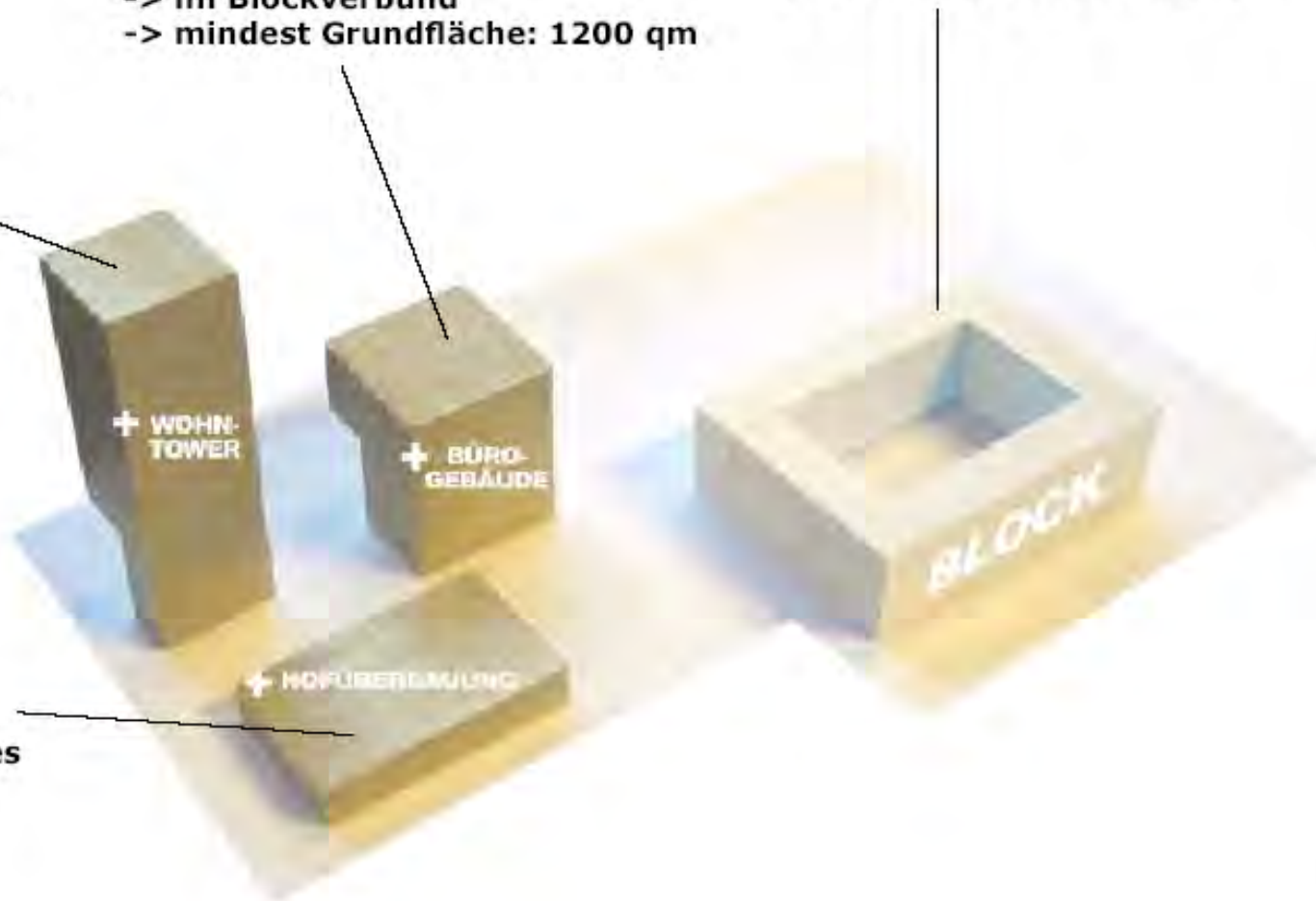
- > bis 40 m hoch
- > im Blockverbund
- > mindest Grundfläche: 1200 qm

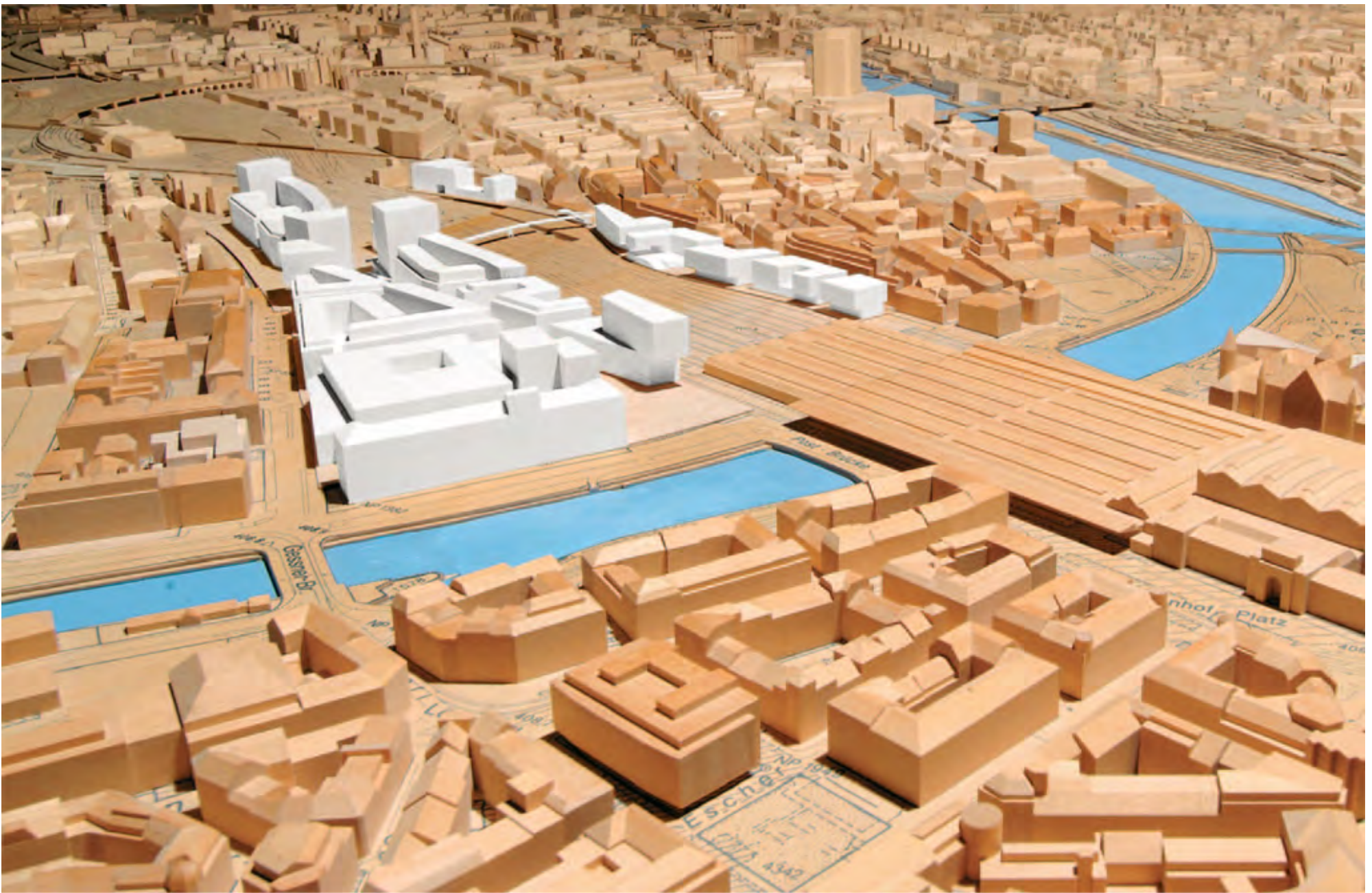
### CITY BLOCK

- > strassendefinierend
- > Traufe bei 18 m
- > Baulinie ist Strassenkante

### HOFÜBERBAUUNG

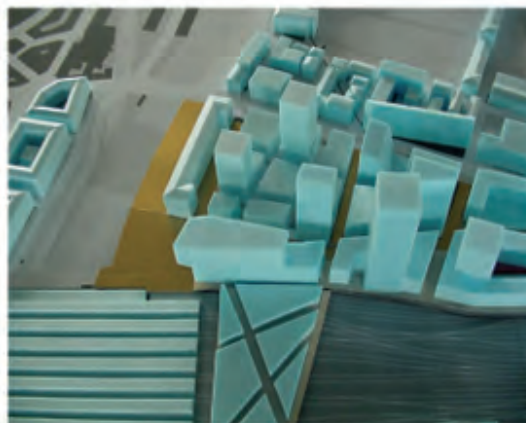
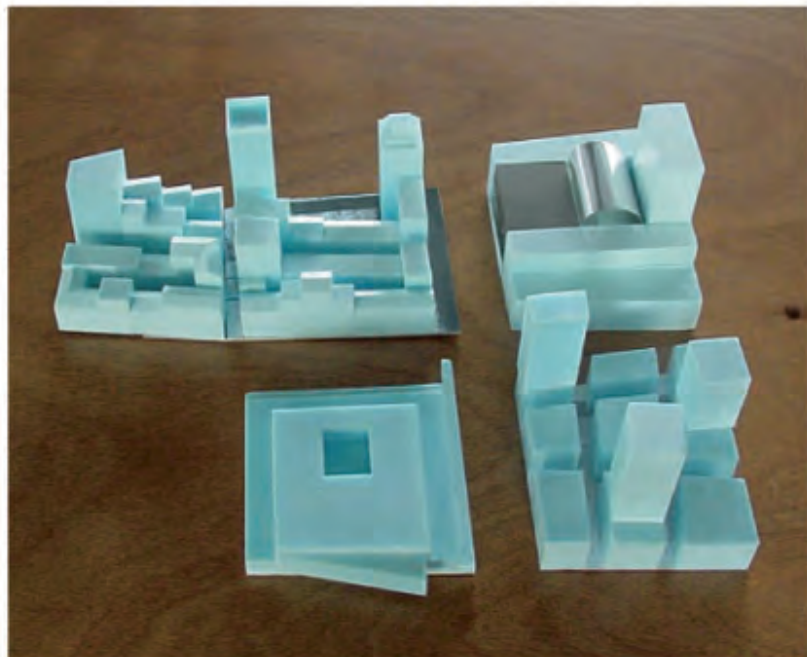
- > öffentliche Nutzung im Innern des Blockes

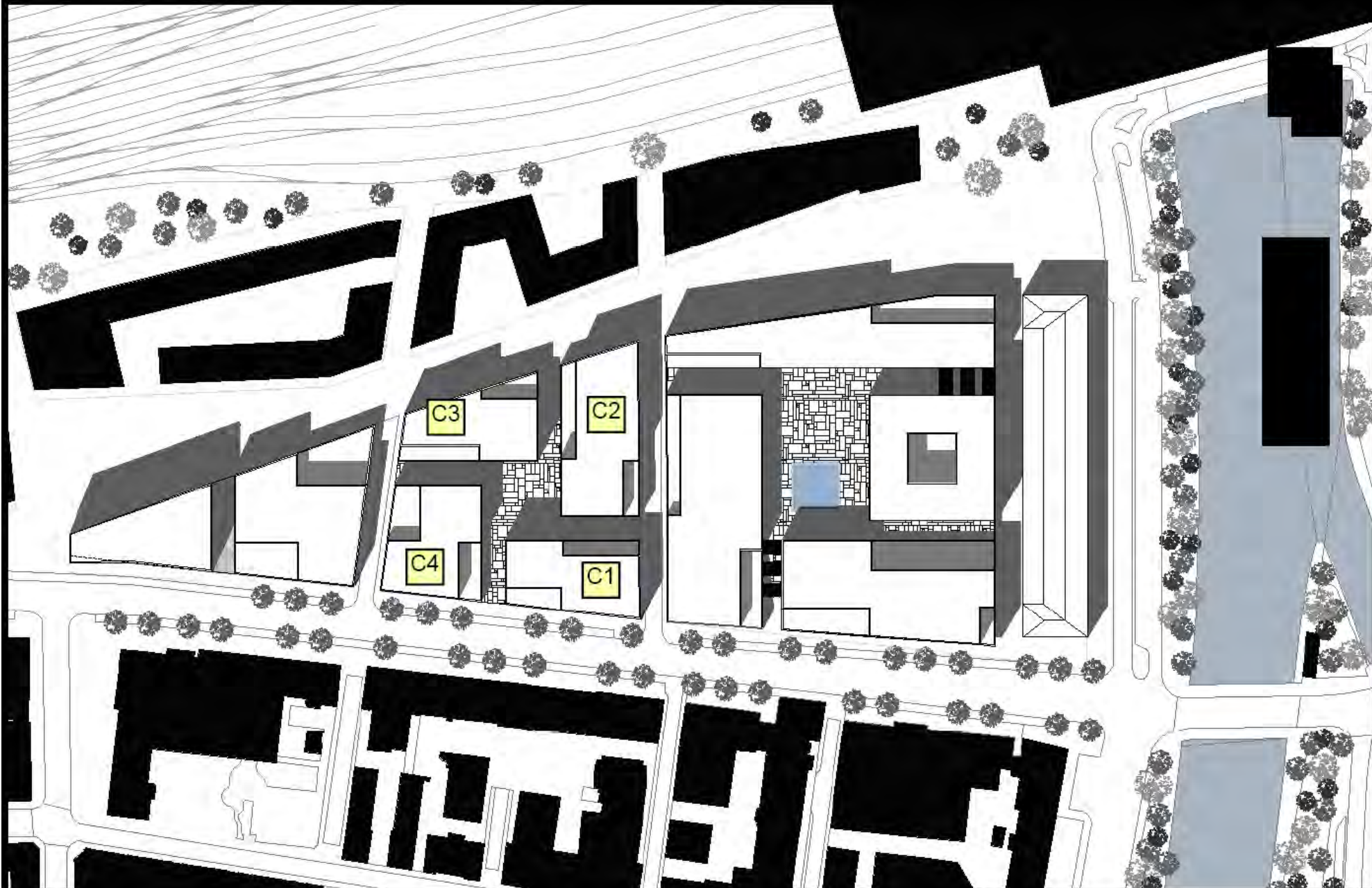




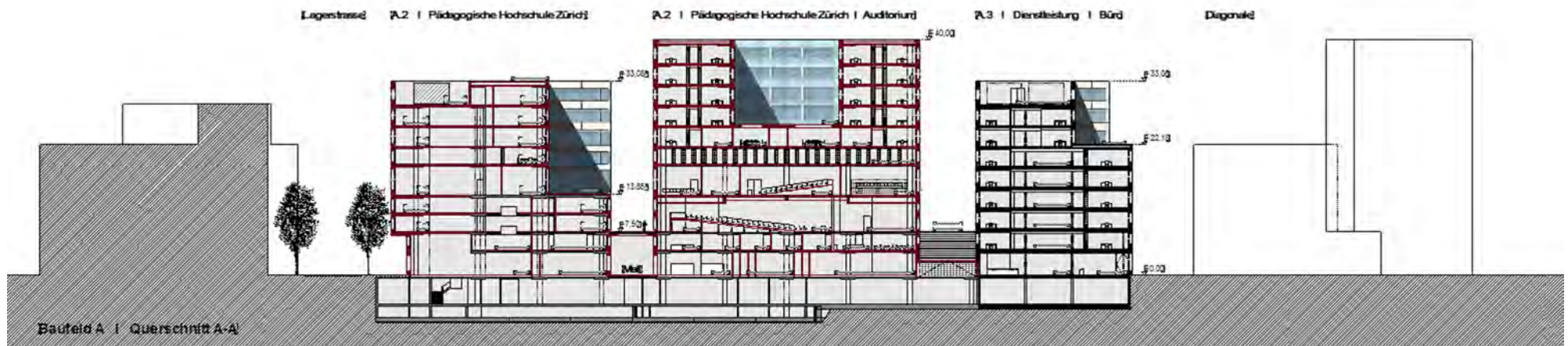
091118 Europa Allee Kees Christiaanse







091118 Europa Allee Kees Christiaanse





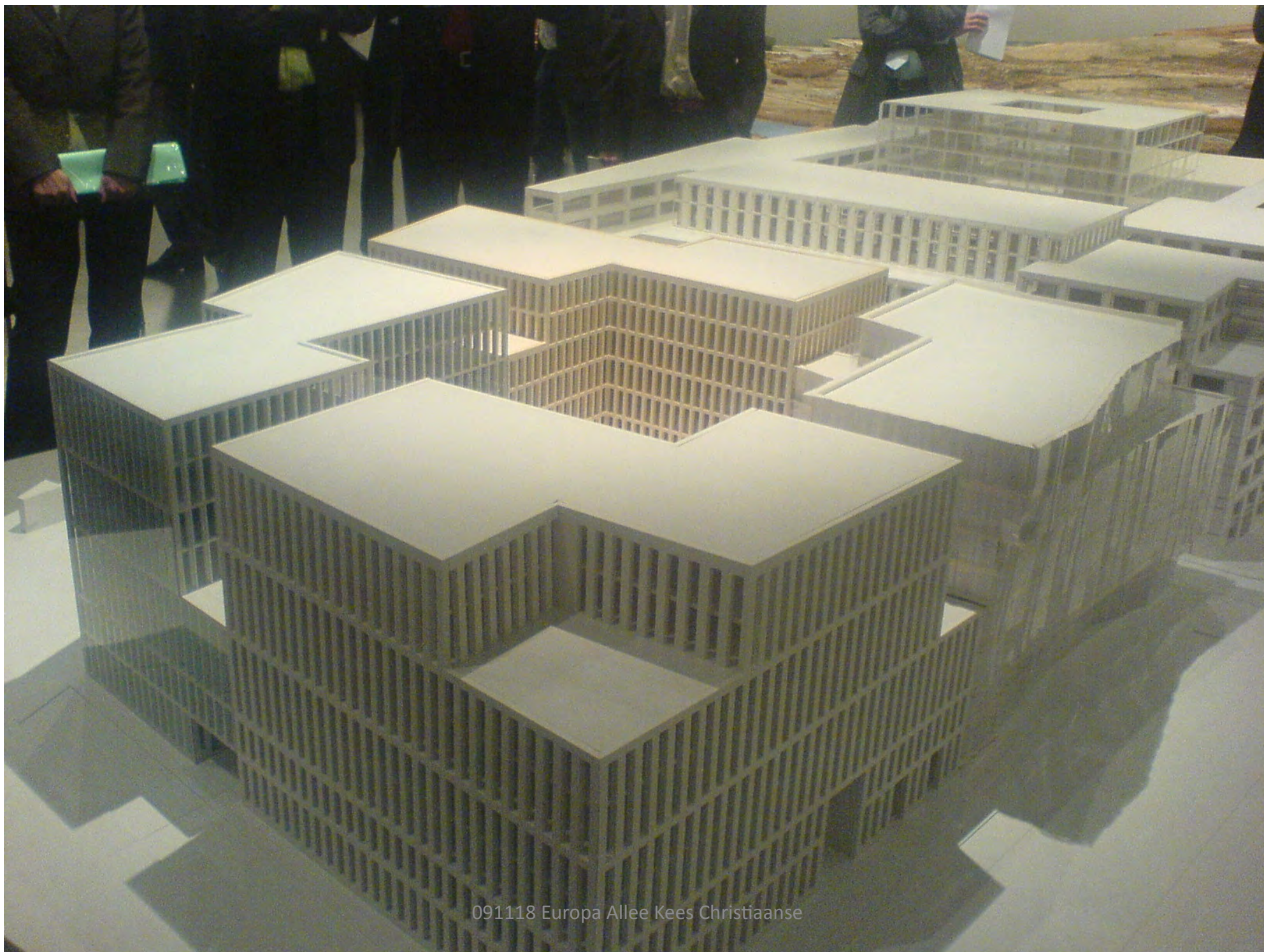
091118 Europa Allee Kees Christiaanse



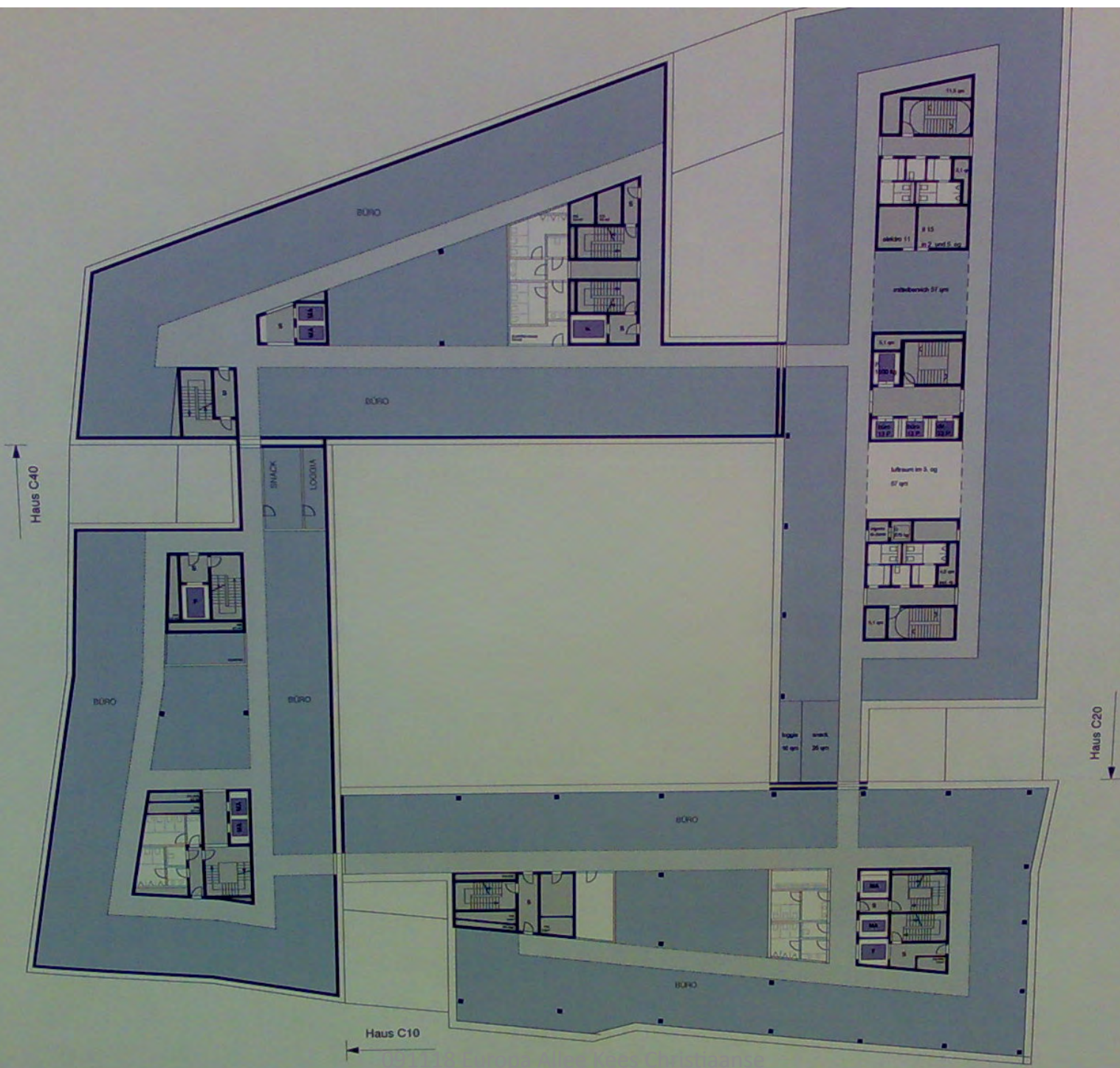


091118 Europa Allee Kees Christiaanse



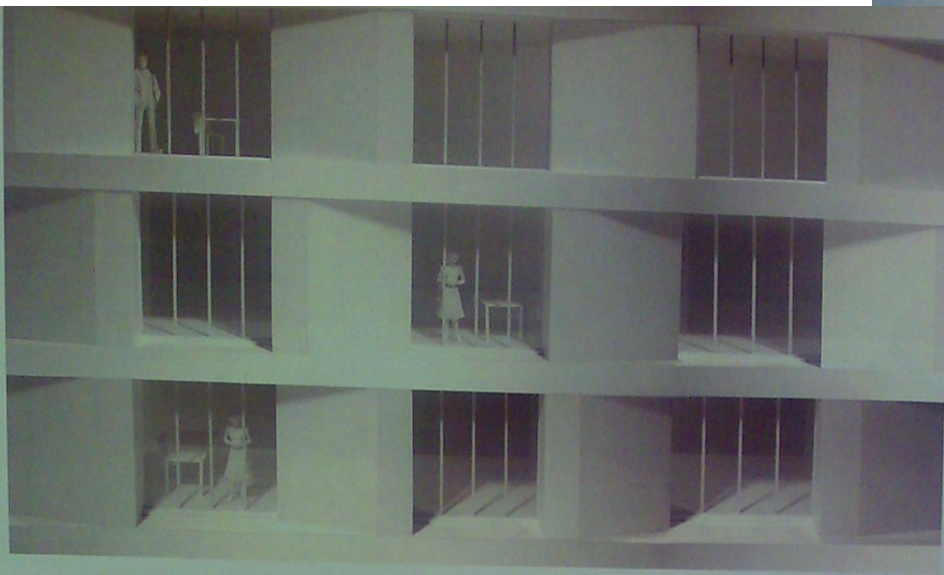


091118 Europa Allee Kees Christiaanse



5. OBERGESCHOSS





INNENRAUM



FASSADENDETAIL



OF



1998, 1999, 2000, 2001, 2002, 2003, 2004, 2005, 2006, 2007, 2008, 2009, 2010, 2011, 2012, 2013, 2014, 2015, 2016, 2017, 2018, 2019, 2020, 2021, 2022, 2023, 2024, 2025, 2026, 2027, 2028, 2029, 2030, 2031, 2032, 2033, 2034, 2035, 2036, 2037, 2038, 2039, 2040, 2041, 2042, 2043, 2044, 2045, 2046, 2047, 2048, 2049, 2050, 2051, 2052, 2053, 2054, 2055, 2056, 2057, 2058, 2059, 2060, 2061, 2062, 2063, 2064, 2065, 2066, 2067, 2068, 2069, 2070, 2071, 2072, 2073, 2074, 2075, 2076, 2077, 2078, 2079, 2080, 2081, 2082, 2083, 2084, 2085, 2086, 2087, 2088, 2089, 2090, 2091, 2092, 2093, 2094, 2095, 2096, 2097, 2098, 2099, 2100, 2101, 2102, 2103, 2104, 2105, 2106, 2107, 2108, 2109, 2110, 2111, 2112, 2113, 2114, 2115, 2116, 2117, 2118, 2119, 2120, 2121, 2122, 2123, 2124, 2125, 2126, 2127, 2128, 2129, 2130, 2131, 2132, 2133, 2134, 2135, 2136, 2137, 2138, 2139, 2140, 2141, 2142, 2143, 2144, 2145, 2146, 2147, 2148, 2149, 2150, 2151, 2152, 2153, 2154, 2155, 2156, 2157, 2158, 2159, 2160, 2161, 2162, 2163, 2164, 2165, 2166, 2167, 2168, 2169, 2170, 2171, 2172, 2173, 2174, 2175, 2176, 2177, 2178, 2179, 2180, 2181, 2182, 2183, 2184, 2185, 2186, 2187, 2188, 2189, 2190, 2191, 2192, 2193, 2194, 2195, 2196, 2197, 2198, 2199, 2200, 2201, 2202, 2203, 2204, 2205, 2206, 2207, 2208, 2209, 2210, 2211, 2212, 2213, 2214, 2215, 2216, 2217, 2218, 2219, 2220, 2221, 2222, 2223, 2224, 2225, 2226, 2227, 2228, 2229, 2230, 2231, 2232, 2233, 2234, 2235, 2236, 2237, 2238, 2239, 2240, 2241, 2242, 2243, 2244, 2245, 2246, 2247, 2248, 2249, 2250, 2251, 2252, 2253, 2254, 2255, 2256, 2257, 2258, 2259, 2260, 2261, 2262, 2263, 2264, 2265, 2266, 2267, 2268, 2269, 2270, 2271, 2272, 2273, 2274, 2275, 2276, 2277, 2278, 2279, 2280, 2281, 2282, 2283, 2284, 2285, 2286, 2287, 2288, 2289, 2290, 2291, 2292, 2293, 2294, 2295, 2296, 2297, 2298, 2299, 2300, 2301, 2302, 2303, 2304, 2305, 2306, 2307, 2308, 2309, 2310, 2311, 2312, 2313, 2314, 2315, 2316, 2317, 2318, 2319, 2320, 2321, 2322, 2323, 2324, 2325, 2326, 2327, 2328, 2329, 2330, 2331, 2332, 2333, 2334, 2335, 2336, 2337, 2338, 2339, 2340, 2341, 2342, 2343, 2344, 2345, 2346, 2347, 2348, 2349, 2350, 2351, 2352, 2353, 2354, 2355, 2356, 2357, 2358, 2359, 2360, 2361, 2362, 2363, 2364, 2365, 2366, 2367, 2368, 2369, 2370, 2371, 2372, 2373, 2374, 2375, 2376, 2377, 2378, 2379, 2380, 2381, 2382, 2383, 2384, 2385, 2386, 2387, 2388, 2389, 2390, 2391, 2392, 2393, 2394, 2395, 2396, 2397, 2398, 2399, 2400, 2401, 2402, 2403, 2404, 2405, 2406, 2407, 2408, 2409, 2410, 2411, 2412, 2413, 2414, 2415, 2416, 2417, 2418, 2419, 2420, 2421, 2422, 2423, 2424, 2425, 2426, 2427, 2428, 2429, 2430, 2431, 2432, 2433, 2434, 2435, 2436, 2437, 2438, 2439, 2440, 2441, 2442, 2443, 2444, 2445, 2446, 2447, 2448, 2449, 2450, 2451, 2452, 2453, 2454, 2455, 2456, 2457, 2458, 2459, 2460, 2461, 2462, 2463, 2464, 2465, 2466, 2467, 2468, 2469, 2470, 2471, 2472, 2473, 2474, 2475, 2476, 2477, 2478, 2479, 2480, 2481, 2482, 2483, 2484, 2485, 2486, 2487, 2488, 2489, 2490, 2491, 2492, 2493, 2494, 2495, 2496, 2497, 2498, 2499, 2500, 2501, 2502, 2503, 2504, 2505, 2506, 2507, 2508, 2509, 2510, 2511, 2512, 2513, 2514, 2515, 2516, 2517, 2518, 2519, 2520, 2521, 2522, 2523, 2524, 2525, 2526, 2527, 2528, 2529, 2530, 2531, 2532, 2533, 2534, 2535, 2536, 2537, 2538, 2539, 2540, 2541, 2542, 2543, 2544, 2545, 2546, 2547, 2548, 2549, 2550, 2551, 2552, 2553, 2554, 2555, 2556, 2557, 2558, 2559, 2560, 2561, 2562, 2563, 2564, 2565, 2566, 2567, 2568, 2569, 2570, 2571, 2572, 2573, 2574, 2575, 2576, 2577, 2578, 2579, 2580, 2581, 2582, 2583, 2584, 2585, 2586, 2587, 2588, 2589, 2590, 2591, 2592, 2593, 2594, 2595, 2596, 2597, 2598, 2599, 2600, 2601, 2602, 2603, 2604, 2605, 2606, 2607, 2608, 2609, 2610, 2611, 2612, 2613, 2614, 2615, 2616, 2617, 2618, 2619, 2620, 2621, 2622, 2623, 2624, 2625, 2626, 2627, 2628, 2629, 2630, 2631, 2632, 2633, 2634, 2635, 2636, 2637, 2638, 2639, 2640, 2641, 2642, 2643, 2644, 2645, 2646, 2647, 2648, 2649, 2650, 2651, 2652, 2653, 2654, 2655, 2656, 2657, 2658, 2659, 2660, 2661, 2662, 2663, 2664, 2665, 2666, 2667, 2668, 2669, 2670, 2671, 2672, 2673, 2674, 2675, 2676, 2677, 2678, 2679, 26

Other authors have also shown that the use of a single factor solution is not always the best solution. For example, in a study of the factors influencing the use of a computer, a single factor solution was found to be inadequate. A two-factor solution was found to be more appropriate. The first factor was related to the ease of use of the computer, and the second factor was related to the perceived usefulness of the computer. This suggests that the use of a single factor solution may be inadequate in some cases, and that a two-factor solution may be more appropriate.



091118 Europa Allee Kees Christiaanse



DOI: 10.1002/for

Declaro que el presente es un original, de lo contrario, si lo contrario fuera, lo declaro falso y me comprometo a responder por ello. Si lo contrario fuera, lo declaro falso y me comprometo a responder por ello. Si lo contrario fuera, lo declaro falso y me comprometo a responder por ello.

recomendamos a los usuarios que deseen utilizar el sistema de gestión de la información de la biblioteca, que se comuniquen con el personal de la biblioteca a través de la página de Internet de la biblioteca, o bien, que se comuniquen con el personal de la biblioteca a través de la página de Internet de la biblioteca, o bien, que se comuniquen con el personal de la biblioteca a través de la página de Internet de la biblioteca.

[illegible]

the relationship between the two variables is not linear, appropriate interpretation of the regression coefficient requires that the relationship be linear. Therefore, in the case of a non-linear relationship, the regression coefficient is not meaningful. In the case of a non-linear relationship, the regression coefficient is not meaningful. In the case of a non-linear relationship, the regression coefficient is not meaningful.

[illegible]





091118 Europa Allee Kees Christiaanse



091118 Europa Allee Kees Christiaanse



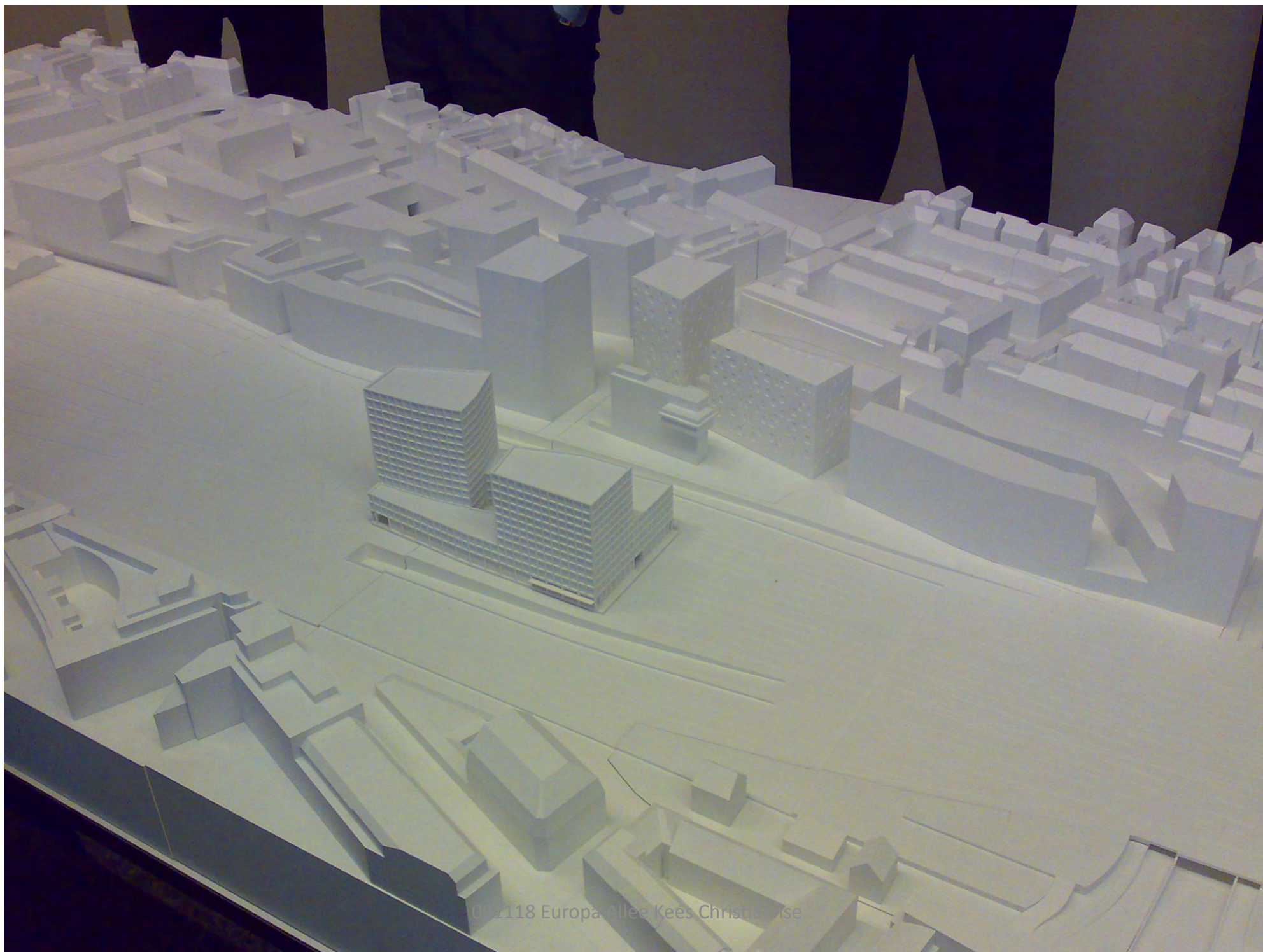
091118 Europa Allee Kees Christiaanse



091118 Europa Allee Kees Christiaanse



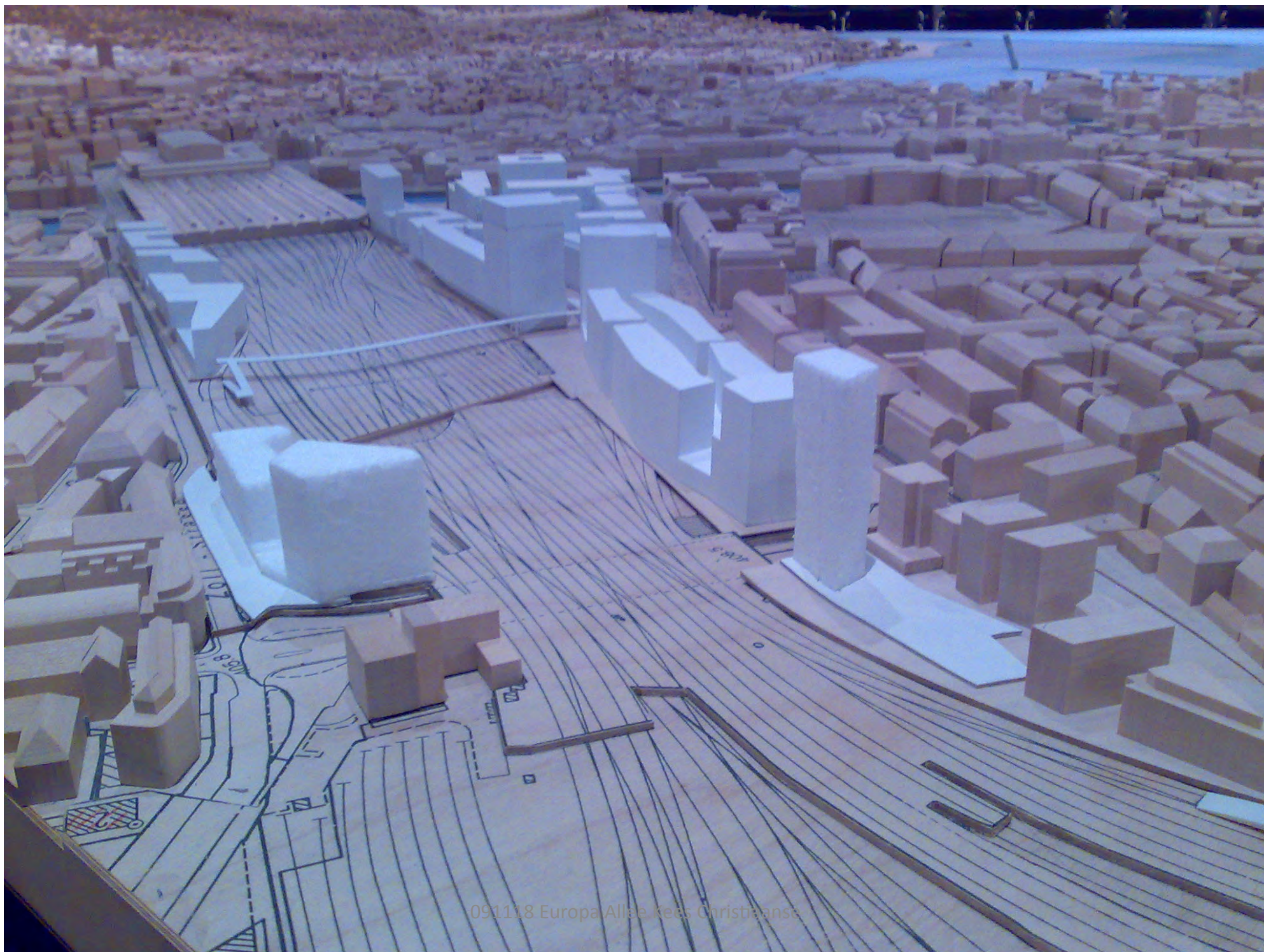
091118 Europa Allee Kees Christiaanse



091118 Europa Allee Kees Christiaanse



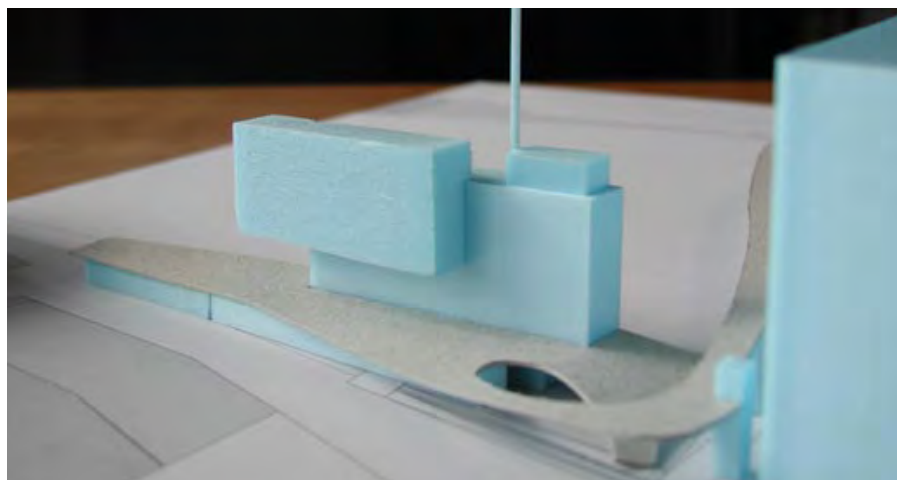
091118 Europa Allee Kees Christiaanse



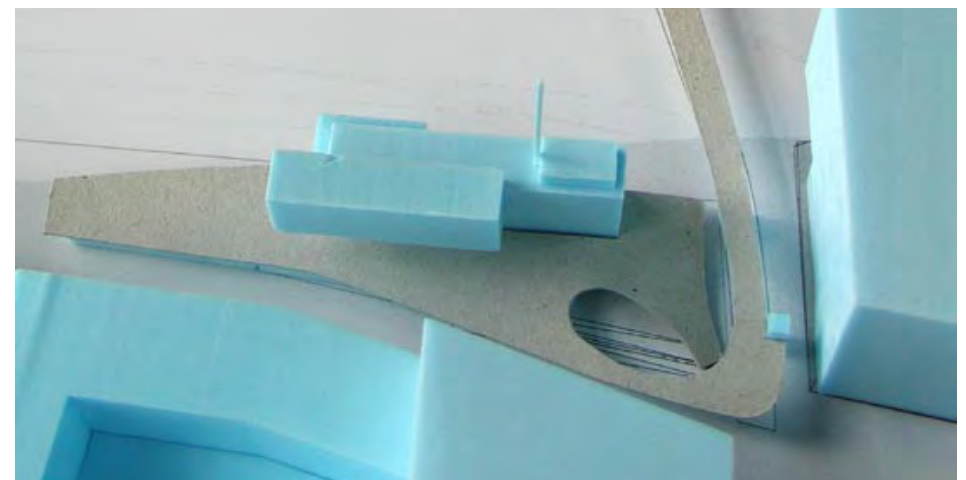
091118 Europa Allée Kees Christaans



Das Stellwerk muss als Bauskulptur erhalten bleiben



Höhe des bestehenden Baukörpers nicht überschreiten.



Anbauten im Süden dürfen die

091118 Europa Allee Kees Christiaanse

**regeln** - baufeld stellwerk